

Port Grimaud Holiday Apartment



www.islandofsand.com

Port Grimaud is unique.

Built by François Spoerry an architect and keen sailor, his vision was to create a waterside village with easy access for boats and a peaceful atmosphere - only residents are allowed access by car.

There are 2 beaches, 7 km of canals, shops, restaurants, markets, and tennis all in a typical provençal setting.

Beautifully situated for the bustling town of St Tropez or the quiet countryside of the Maures with it's many pretty hill top towns.

This booklet should give an insight to Port Grimaud, the apartment, the surrounding area and activities.

We hope you enjoy it as much as we do.

Vanessa and Russell

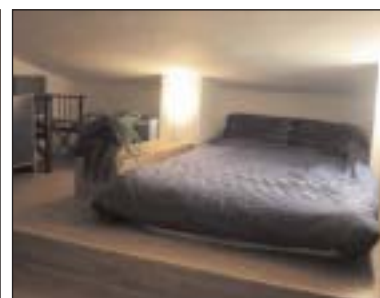


The Apartment

Has a secluded south facing terrace overlooking the river Giscle, there is plenty of room for dining outside and all outdoor furniture is provided.

There are two sofas downstairs one of which converts to a double sofa bed. A small colour TV is provided which shows programmes in French, English and German.

The mezzanine has a double bed - please note there is restricted height in this area.





The galley kitchen has two hotplates, a full size oven, fridge and a microwave. There is an additional fold out work surface, a coffee machine is also provided.

The apartment has air-conditioning and a ceiling fan.

Port Grimaud

With traffic kept to a minimum and a 20 km speed limit in place Port Grimaud is very safe. Bicycles are common. There is 24 hour security on the gate and the grounds are tended by a team of dedicated gardeners.

The beach is less than a minute from the apartment and is rarely crowded the sand slopes gently to the sea, making bathing very safe.

The water taxi can be picked up a few minutes walk from the apartment, where the Canal d' Rond du Eau meets the Grand Canal, a



wave to the driver at 15 minutes to and past the hour will get you a pleasant trip around the canals. The most popular destination is Place du Marché, water taxi's leave here on the hour and half past - look for the white roofed residents boat (free passes for this in the apartment).

Electric boats can be hired by the hour in Place du Marché. Tennis is also available.

A fun train can be taken to the mediaeval village of Grimaud (more details below).



Grimaud

Grimaud is about 5 km inland and is topped by a ruined castle. Below this there is an amphitheatre where performances are held in the Summer months.

The pretty winding streets retain all their character, you'll find arts and crafts, antiques and restaurants.

The other side of the village you'll see a reconstructed wooden windmill and below this a steep walk to the old stone fairy bridge.

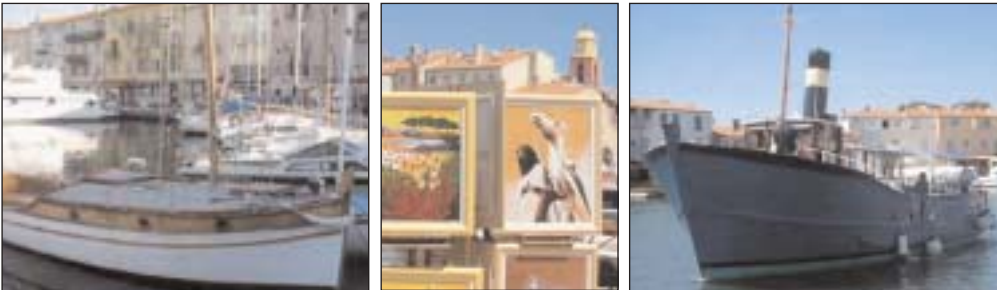


St Tropez

Situated approx 6 km away by road or arrive by ferry, there's one an hour from Port Grimaud it takes 20 minutes and drops you in the heart of St Tropez harbour.

Artist display there paintings along the harbourside, here you'll also find other boat trips, as well as plenty of bars and restaurants.

St Tropez, though bustling still retains it's old fishing village character and has no visible development. There is a market on Saturday and Tuesday mornings and a fort above the town.



La Guard-Freinet (pictured)

This village is a little further on from Grimaud into the Maures, and again is very unspoilt, there are of course restaurants and bars.

The village is set in beautiful countryside and you can climb to the Cross or the ruined Fort, or both, decent shoes are advised.

Ramatuelle

High above St Tropez surrounded by vineyards, lose yourself in this hill-top village, it's warren of lanes are most atmospheric in the evening.

Nearby is a lighthouse, with walks down to a rocky outcrop.



Gassin

Many of the local villages claim to be "One of the most beautiful villages in France" here's another contender. Robbie Williams and Geri Halliwell both have houses here, so keep a look out. Also what must be the narrowest 'street' in the world is here. (see pic below left)

Ste. Maxime

The opposite side of the bay from St Tropez is Ste, Maxime, it has many more reasonably priced restaurants a large marina and pretty back streets. You can also dine or gamble at the Casino and if diving is not your thing take to the sea in the aquascope.



Local Markets

Soak up the atmosphere, lots of local produce along with a smattering of antiques, the locals are here too so there must be bargains to be had.

Note: markets tend to be mornings only.



Monday Port Grimaud - Place François Spoerry

Tuesday St Tropez

Wednesday Cogolin

Thursday Port Grimaud - Place du Marché,
Grimaud - Place Vieille, Ramatuelle

Friday Ste. Maxime, Port Grimaud - Place
François Spoerry

Saturday St Tropez, Cogolin

Sunday Port Grimaud - Place du Marché,
Gassin, Ramatuelle



Restaurants

Port Grimaud has many Restaurants to suit most tastes and pockets, many have waterside views and seating or spill out on to one of the pretty squares.

Shops

There is a Géant supermarket just 1 km away where you will find everything from fresh fish to sticking plaster. Closed on Sundays.

There is a very good Patisserie just opposite the main entrance to Port Grimaud where you can also buy fresh vegetables, open everyday but closes for lunch.





Activities

Tennis, Sailing school, Boat hire, Wind surfing etc - *within Port Grimaud*

Karting - *2 kms towards Grimaud*

Luna Park (fun fair), Tropical Golf - *1.5 km in St Tropez direction*

Aqua Park, Horse riding, Tree Top Adventure - *10 km towards A8 after Ste. Maxime*

Bowling, Golf, - *3/5 km towards Ste. Maxime*

Extensive details are provided in a folder within the apartment

2006 Prices - per week

5 Nov - 17 Dec 2005	£250
17 Dec - 31 Dec	£270
31 Dec - 1 April	£250
1 April - 27 May	£380
27 May - 1 July	£465
1 July - 2 Sept	£525
2 Sept - 7 Oct	£440
7 Oct - 4 Nov	£330
4 Nov - 23 Dec	£250

If you require any more details please contact Vanessa or Russell on 020 8783 0084 or see www.islandofsand.com

